



SP 3200 EI

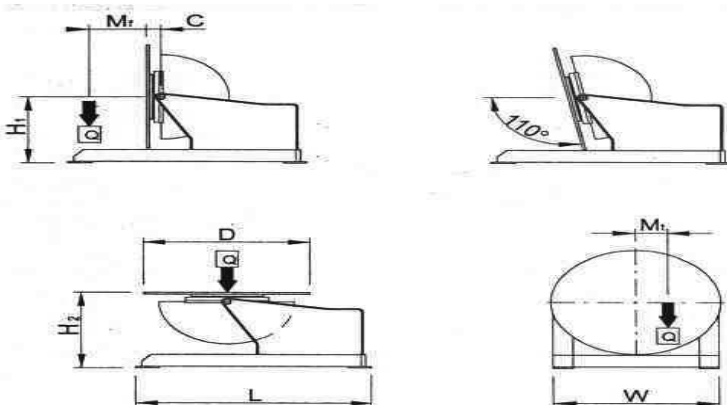
Posizionatore a tavola rotante portata 3200 Kg.
Rotazione motore con tecnologia ad inverter (I), riduttore a vite senza fine e ralla a sfere Inclinazione con motore elettrico (E)

Turntable type positioner maximum load 3200 Kg.
Motor rotation by inverter technology (I), motor through worm gear and ball slewing ring. Tilt: with electric motor (E).

Positionneur à table rotative portée 3200 Kg.
Rotation avec moteur commandée par onduleur (I), réducteur à vis sans fin et butée à billes. Inclinaison avec moteur électrique (E).

Drehtisch-Positionervorrichtungen Tragkraft 3200 Kg.
Motorrotation durch Invertertechnology (I), Endlosschneckenuntersetzung und Kugelscheibe. Schwenkung mit Elektromotor (E).

Posicionadores de mesa giratoria portal 3200 Kg. Rotación con motor a tecnología de inverter (I), reductor de tornillo sin fin y rangua de bolas. Inclinación con motor eléctrico (E).



| SP 3200 EI |
|-------------------------------|
| Q kg = 3200 |
| Mt daNm = 423 |
| Mf daNm = 955 |
| D mm = 1400 |
| H1 mm = 890 |
| H2 mm = 1010 |
| C mm = 125 |
| L mm = 2114 |
| W mm = 1380 |
| Rpm = 0.053-0.53 |
| Sec. = 90 |
| Volt. = 3x380 |
| Volt. = 24 |
| LxWxH2 mm = 2114x1380x1010 |
| Kg = 1900 |

| ITEM | DESCRIPTION | PRICE CHF |
|------------|---|-----------|
| SP 3200-EI | Turntable manual tilt. With pedal | 33440.00 |
| SP/SOR | Stop at 360°; adjustable overwelding function and auto return to “ 0” | 1550.00 |
| BPT300 M | Pneumatically actuated torch arm for Mig welding | 2945.00 |
| BPT300 T | Pneumatically actuated torch arm for Tig welding | 3705.00 |
| SP/PMA | Single pedal control (start-stop) with mt.5 (197”) connection cable | 228.00 |
| SP/TMA | Start-stop control with botton and 5 mt. (197”) connection cable | 342.00 |
| SP/TTA | Table delayed start device for TIG welding | 988.00 |
| SP/VL | Display LCD | 608.00 |
| SP/GR1 | 1-way rotating coupling for air or gas | 551.00 |
| SP/GR2 | 2-way rotating coupling for water | 646.00 |
| SP/SCH | Hi-frequency shielding | 570.00 |

Packaging

Plants are usually supplied protected by a film, wooden crates are available on request with surcharge: 70 CHF NET