



# SP 350 M

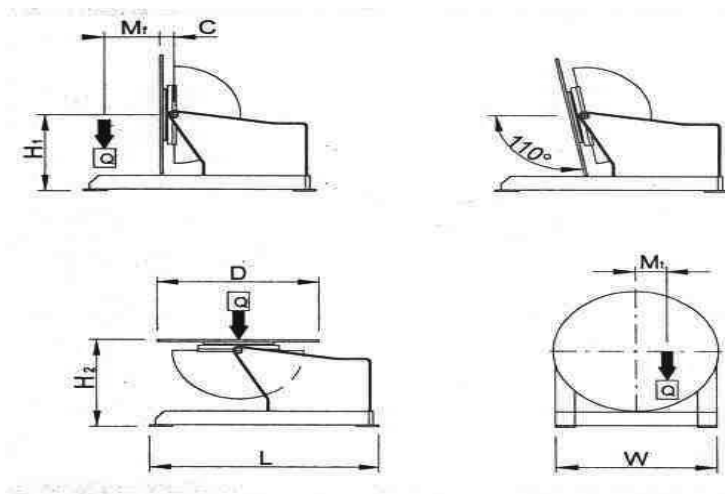
Posizionatore a tavola rotante portata 350 Kg. Rotazione con motore auto-frenante a corrente continua, riduttore a vite senza fine e ralla a sfere. Inclinazione manuale (M).

Turntable type positioner maximum load 350 Kg. Slewing by DC self-braking motor through worm and ball slewing ring. Tilt: manual (M).

Positionneur à table rotative portée 350 Kg. Rotation avec moteur automaintenu à courant continu, réducteur à vis sans fin et butée à billes. Inclinaison manuelle (M).

Drehtisch-Positionervorrichtungen Tragkraft 350 Kg. Rotation mit selbstbremsenden Gleichstrommotor, Endlos-schneckenuntersetzung und Kugelscheibe. Schwenkung manuell (M).

Posicionadores de mesa giratoria portal 350 Kg. Rotación por motor freno de corriente continua, reductor de tornillo sin fin y rangua de bolas. Inclinaçión manual (M).



SP 350 M
Q kg = 350
Mt daNm = 28
Mf daNm = 45
D mm = 650
H1 mm = 800
H2 mm = 750
C mm = 85
L mm = 950
W mm = 630
Rpm = 0.3-3
Sec. = 50
Volt. = 1x220
Volt. = 24
LxWxH2 mm = 950x630x750
Kg = 230

ITEM	DESCRIPTION	PRICE CHF
SP 350-M	Turntable manual tilt. With pedal	11400.00
SP/SOR	Stop at 360°; adjustable overwelding function and auto return to “ 0”	1550.00
BPT300 M	Pneumatically actuated torch arm for Mig welding	1945.00
BPT300 T	Pneumatically actuated torch arm for Tig welding	3705.00
SP/PMA	Single pedal control (start-stop) with mt.5 (197” ) connection cable	228.00
SP/TMA	Start-stop control with botton and 5 mt. (197” ) connection cable	342.00
SP/TTA	Table delayed start device for TIG welding	988.00
SP/VL	Display LCD	608.00
SP/GR1	1-way rotating coupling for air or gas	551.00
SP/GR2	2-way rotating coupling for water	646.00
SP/SCH	Hi-frequency shielding	570.00

#### Packaging

Plants are usually supplied protected by a film, wooden crates are available on request with surcharge: 70 CHF NET