



# SP 4500 EI

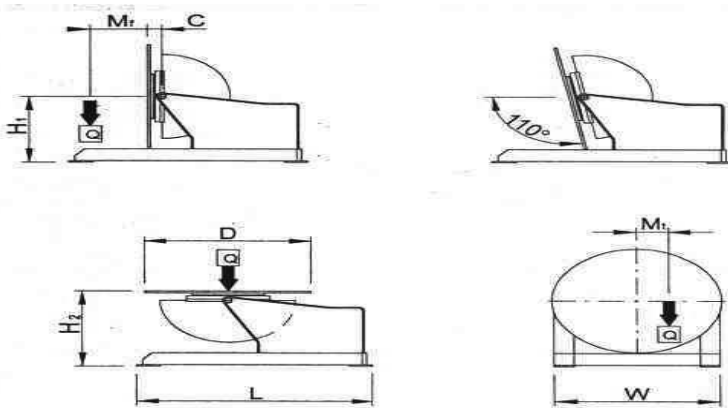
Posizionatore a tavola rotante portata 4500 Kg.  
Rotazione motore con tecnologia ad inverter (I),  
riduttore a vite senza fine e ralla a sfere Inclinazione  
con motore elettrico (E).

Turntable type positioner maximum load 4500 Kg.  
Motor rotation by inverter technology (I), motor  
through worm gear and ball slewing ring. Tilt: with  
electric motor (E).

Positionneur à table rotative portée 4500 Kg.  
Rotation avec moteur commandée par onduleur (I),  
réducteur à vis sans fin et butée à billes. Inclinaison  
avec moteur électrique (E).

Drehtisch-Positionervorrichtungen Tragkraft 4500 kg.  
Motorrotation durch Invertertechnologie (I),  
Endlosschneckenuntersetzung und Kugelscheibe. Schwenkung mit Elektromotor (E).

Posicionadores de mesa giratoria portal 4500 Kg. Rotación con motor a tecnología de inverter (I),  
reductor de tornillo sin fin y rangua de bolas. Inclinación con motor electrico (E)



SP 4500 EI
Q kg = 4500
Mt da Nm = 500
Mf da Nm = 1400
D mm = 1400
H1 mm = 890
H2 mm = 1010
C mm = 125
L mm = 2114
W mm = 1380
Rpm = 0,053 – 0,53
Sec. = 90
Volt. = 3x380
Volt. = 24
LxWxH2 mm = 2114x1380x1010
Kg = 2000

ITEM	DESCRIPTION	PRICE CHF
SP 4500-EI	Turntable manual tilt. With pedal	41420.00
SP/SOR	Stop at 360°; adjustable overwelding function and auto return to “ 0”	1550.00
BPT300 M	Pneumatically actuated torch arm for Mig welding	2945.00
BPT300 T	Pneumatically actuated torch arm for Tig welding	3705.00
SP/PMA	Single pedal control (start-stop) with mt.5 (197” ) connection cable	228.00
SP/TMA	Start-stop control with botton and 5 mt. (197” ) connection cable	342.00
SP/TTA	Table delayed start device for TIG welding	988.00
SP/VL	Display LCD	608.00
SP/GR1	1-way rotating coupling for air or gas	551.00
SP/GR2	2-way rotating coupling for water	646.00
SP/SCH	Hi-frequency shielding	570.00

#### Packaging

Plants are usually supplied protected by a film, wooden crates are available on request with surcharge: 70 CHF NET