



SP 550 E

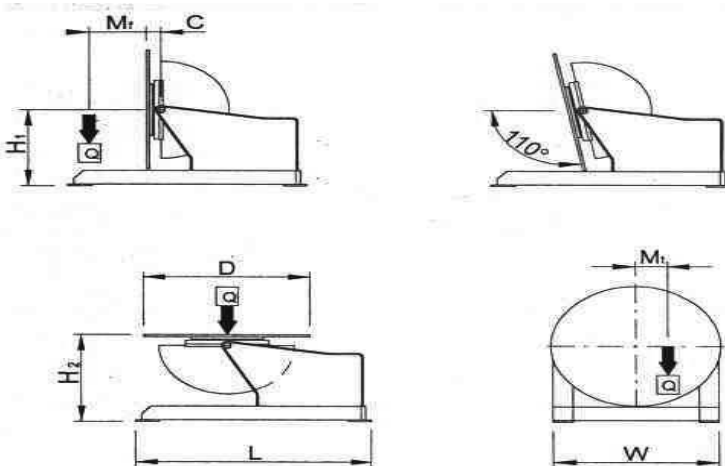
Posizionatore a tavola rotante portata 550 Kg. Rotazione con motore autofrenante a corrente continua, riduttore a vite senza fine e ralla a sfere. Inclinazione con motore elettrico (E).

Turntable type positioner maximum load 550 Kg. Slewing by DC selfbraking motor through worm and ball slewing ring. Tilt: with electric motor (E).

Positionneur à table rotative portée 550 Kg. Rotation avec moteur automatique à courant continu, réducteur à vis sans fin et butée à billes. Inclinaison avec moteur électrique (E).

Drehtisch-Positionervorrichtungen Tragkraft 550 Kg. Rotation mit selbstbremsenden Gleichstrommotor, Endlosschneckenuntersetzung und Kugelscheibe. Schwenkung mit Elektromotor (E).

Posicionadores de mesa giratoria portal 550 Kg. Rotación por motor freno de corriente continua, reductor de tornillo sin fin y rangua de bolas. Inclinación con motor eléctrico (E).



SP 550 E
Q kg = 550
Mt daNm = 53
Mf daNm = 93
D mm = 650
H1 mm = 800
H2 mm = 750
C mm = 85
L mm = 950
W mm = 630
Rpm = 0.2-2
Sec. = 55
Volt. = 3x380
Volt. = 24
LxWxH2 mm = 950x630x750
Kg = 270

ITEM	DESCRIPTION	PRICE CHF
------	-------------	-----------

SP 550-E	Turntable manual tilt. With pedal	16150.00
SP/SOR	Stop at 360°; adjustable overwelding function and auto return to “ 0”	1550.00
BPT300 M	Pneumatically actuated torch arm for Mig welding	2945.00
BPT300 T	Pneumatically actuated torch arm for Tig welding	3705.00
SP/PMA	Single pedal control (start-stop) with mt.5 (197”) connection cable	228.00
SP/TMA	Start-stop control with botton and 5 mt. (197”) connection cable	342.00
SP/TTA	Table delayed start device for TIG welding	988.00
SP/VL	Display LCD	608.00
SP/GR1	1-way rotating coupling for air or gas	551.00
SP/GR2	2-way rotating coupling for water	646.00
SP/SCH	Hi-frequency shielding	570.00

Packaging

Plants are usually supplied protected by a film, wooden crates are available on request with surcharge: 70 CHF NET