



# SPS 100 S

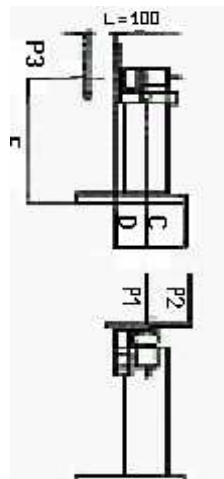
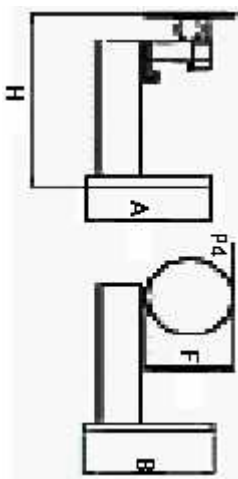
Posizionatore a tavola rotante portata 100 Kg. Rotazione con motore auto-frenante a corrente continua, riduttore a vite senza fine e ralla a sfere. Inclinazione manuale.

Turntable type positioner maximum load 100 Kg. Slewing by DC selfbraking motor through worm and ball slewing ring. Tilt: manual.

Positionneur à table rotative portée 100 Kg. Rotation avec moteur auto-maintenu à courant continu, réducteur à vis sans fin et butée à billes. Inclinaison manuelle.

Drehtisch-Positionervorrichtungen Tragkraft 100 Kg.  
Rotation mit selbstbremsenden Gleichstrommotor,  
Endlosschneckenuntersetzung und Kugelscheibe.  
Schwenkung manuell .

Posicionadores de mesa giratoria portal 100 Kg. Rotación por motor freno de corriente continua, reductor de tornillo sin fin y rangua de bolas. Inclinaçión manual.



SPS 100 S
A = 600
B = 500
C = 330
F diam mm = 400
E = 710
D = 70
H = 910
Volt = 220
RPM = 0,5 - 12
P1 Kg = 100
P2 Kg = 50
Mf Kgm = 7.6
P3 Kg = 28
P4 Kg = 7
Mt Kgm = 7
PESO Kg/Weight = 65

ITEM	DESCRIPTION	PRICE CHF
SPS 100 S	Turntable positioner for bench use. Manual tilt. With pedal	5700.00
BPT 300 M	Pneumatically actuated torch arm for MIG welding	2945.00
BPT 300 T	Pneumatically actuated torch arm for TIG welding	3705.00

#### ACCESSORIES

SPS/TT	Table delayed start device for TIG welding	798.00
SPS/SCH	Hi-frequency shielding	570.00
SPS/ML	Display LCD	608.00
SP/TF	Crater filler device for TIG/WIG welding	912.00
CTP	Pneumatically actuated tail stock	2622.00

#### LEGEND

SPS	Turntable positioner, standard version
SPS ... S	Turntable positioner with overwelding function and single control for slewing and welding power source start
SPS ... HC	Turntable positioner with 100 mm. hollow centre turntable
SPS ... S HC	Turntable positioner with overwelding function, single control for slewing & welding power source start and hollow centre turntable

Packaging : wooden crate surcharge CHF 42.00 net