



SPS 200

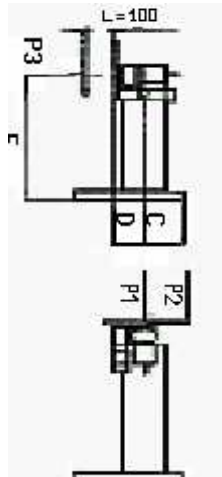
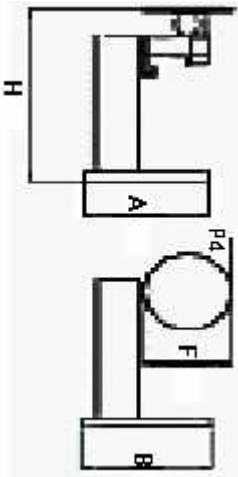
Posizionatore a tavola rotante portata 200 Kg. Rotazione con motore auto-frenante a corrente continua, riduttore a vite senza fine e ralla a sfere. Inclinazione manuale.

Turntable type positioner maximum load 200 Kg. Slewing by DC selfbraking motor through worm and ball slewing ring. Tilt: manual

Positionneur à table rotative portée 200 Kg. Rotation avec moteur auto-maintenu à courant continu, réducteur à vis sans fin et butée à billes. Inclinaison manuelle.

Drehtisch-Positionervorrichtungen Tragkraft 200 Kg.
Rotation mit selbstbremsenden Gleichstrommotor,
Endlosschneckenuntersetzung und Kugelscheibe.
Schwenkung manuell .

Posicionadores de mesa giratoria portal 200 Kg. Rotación por motor freno de corriente continua, reductor de tornillo sin fin y rangua de bolas. Inclinación manual .



SPS 200
A = 600
B = 500
C = 330
F diam mm = 400
E = 710
D = 70
H = 910
Volt = 220
RPM = 0,5 – 12
P1 Kg = 200
P2 Kg = 100
Mf Kgm = 12.9
P3 Kg = 43
P4 Kg = 12
Mt Kgm = 12
PESO Kg/Weight = 100

ITEM	DESCRIPTION	PRICE CHF
SPS 200	Turntable positioner for bench use. Manual tilt. With pedal	7220.00

ACCESSORIES

SPS/TT	Table delayed start device for TIG welding	798.00
SPS/SCH	Hi-frequency shielding	570.00
SPS/VL	Display LCD	608.00
SP/TF	Crater filler device for TIG/WIG welding	912.00

LEGEND

SPS	Turntable positioner, standard version
SPS ... S	Turntable positioner with overwelding function and single control for slewing and welding power source start
SPS ... HC	Turntable positioner with 100 mm. hollow centre turntable
SPS ... S HC	Turntable positioner with overwelding function, single control for slewing & welding power source start and hollow centre turntable

Packaging : wooden crate surcharge CHF 42.00 net