



SPS 200 S

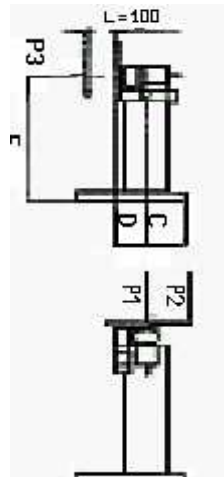
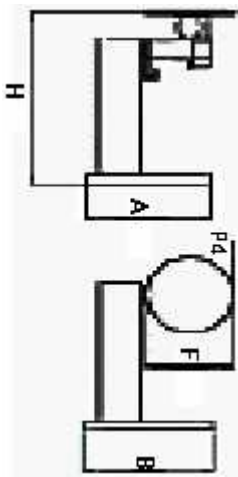
Posizionatore a tavola rotante portata 200 Kg. Rotazione con motore auto-frenante a corrente continua, riduttore a vite senza fine e ralla a sfere. Inclinazione manuale.

Turntable type positioner maximum load 200 Kg. Slewing by DC selfbraking motor through worm and ball slewing ring. Tilt: manual.

Positionneur à table rotative portée 200 Kg. Rotation avec moteur auto-maintenu à courant continu, réducteur à vis sans fin et butée à billes. Inclinaison manuelle.

Drehtisch-Positionervorrichtungen Tragkraft 200 Kg. Rotation mit selbstbremsenden Gleichstrommotor, Endlosschneckenuntersetzung und Kugelscheibe. Schwenkung manuell.

Posicionadores de mesa giratoria portal 200 Kg. Rotación por motor freno de corriente continua, reductor de tornillo sin fin y rangua de bolas. Inclinación manual.



SPS 200 S
A = 600
B = 500
C = 330
F diam mm = 400
E = 710
D = 70
H = 910
Volt = 220
RPM = 0,5 – 12
P1 Kg = 200
P2 Kg = 100
Mf Kgm = 12.9
P3 Kg = 43
P4 Kg = 12
Mt Kgm = 12
PESO Kg/Weight = 100

ITEM	DESCRIPTION	PRICE CHF
SPS 200 S	Turntable positioner for bench use. Manual tilt. With pedal	7980.00
BPT 300 M	Pneumatically actuated torch arm for MIG welding	2945.00
BPT 300 T	Pneumatically actuated torch arm for TIG welding	3705.00

ACCESSORIES

SPS/TT	Table delayed start device for TIG welding	798.00
SPS/SCH	Hi-frequency shielding	570.00
SPS/ML	Display LCD	608.00
SP/TF	Crater filler device for TIG/WIG welding	912.00
CTP	Pneumatically actuated tail stock	2945.00

LEGEND

SPS	Turntable positioner, standard version
SPS ... S	Turntable positioner with overwelding function and single control for slewing and welding power source start
SPS ... HC	Turntable positioner with 100 mm. hollow centre turntable
SPS ... S HC	Turntable positioner with overwelding function, single control for slewing & welding power source start and hollow centre turntable

Packaging : wooden crate surcharge CHF 42.00 net