



SPS 75

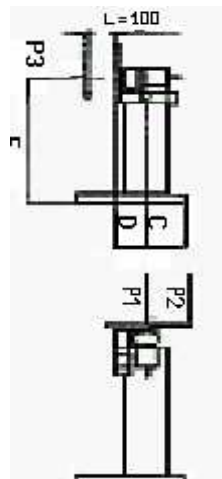
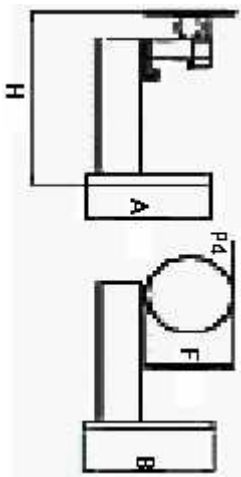
Posizionatore a tavola rotante portata 70 Kg. Rotazione con motore auto-
frenante a corrente continua, riduttore a vite senza fine e ralla a sfere.
Inclinazione manuale.

Turntable type positioner maximum load 70 Kg. Slewing by DC selfbraking
motor through worm and ball slewing ring. Tilt: manual.

Positionneur à table rotative portée 70 Kg. Rotation avec moteur auto-
maintenu à courant continu, réducteur à vis sans fin et butée à billes.
Inclinaison manuelle.

Drehtisch-Positionervorrichtungen Tragkraft 70 Kg. Rotation mit
selbstbremsenden Gleichstrommotor, Endlosschneckenuntersetzung und
Kugelscheibe. Schwenkung manuell.

Posicionadores de mesa giratoria portal 70 Kg. Rotación por motor freno de
corriente continua, reductor de tornillo sin fin y rangua de bolas. Inclinación manual.



SPS 75
A = 600
B = 500
C = 330
F diam mm = 400
E = 710
D = 70
H = 910
Volt = 220
RPM = 0,5 - 12
P1 Kg = 70
P2 Kg = 35
Mf Kgm = 7
P3 Kg = 48
P4 Kg = 30
Mt Kgm = 5
PESO Kg/Weight = 65

ITEM	DESCRIPTION	PRICE CHF
SPS 75	Turntable positioner for bench use. Manual tilt. With pedal	3800.00

ACCESSORIES

SPS/TT	Table delayed start device for TIG welding	798.00
SPS/SCH	Hi-frequency shielding	570.00
SPS/VL	Display LCD	608.00
SP/TF	Crater filler device for TIG/WIG welding	912.00

LEGEND

SPS	Turntable positioner, standard version
SPS ... S	Turntable positioner with overwelding function and single control for slewing and welding power source start
SPS ... HC	Turntable positioner with 100 mm. hollow centre turntable
SPS ... S HC	Turntable positioner with overwelding function, single control for slewing & welding power source start and hollow centre turntable

Packaging : wooden crate surcharge CHF 42.00 net