



SPS 75 S

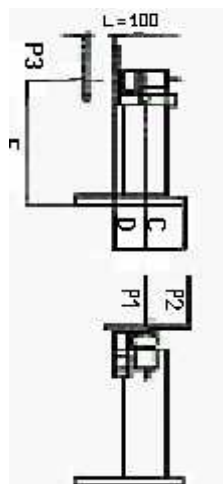
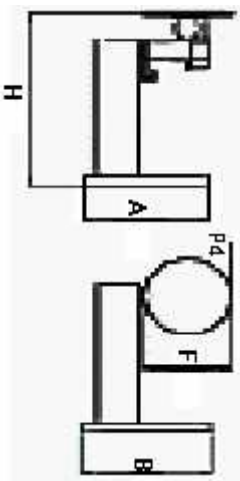
Posizionatore a tavola rotante portata Kg. 75 Rotazione con motore auto frenante a corrente continua, riduttore a vite senza fine e ralla a sfere. Inclinazione manuale.

Turntable type positioner maximum load Kg. 75 Slewing by DC selfbraking motor through worm and ball slewing ring. Tilt: manual.

Positionneur à table rotative portée Kg. 75 Rotation avec moteur automaintenu à courant continu, réducteur à vis sans fin et butée à billes. Inclinaison manuelle.

Drehtisch-Positionervorrichtungen Tragkraft Kg. 75 Rotation mit selbstbremsenden Gleichstrommotor, Endlosschneckenuntersetzung und Kugelscheibe. Schwenkung manuell .

Posicionadores de mesa giratoria portal Kg. 75 Rotación por motor freno de corriente continua, reductor de tornillo sin fin y rangua de bolas. Inclinación manual



SPS 75 S
A = 600
B = 500
C = 330
F diam mm = 400
E = 710
D = 70
H = 910
Volt = 220
RPM = 0,5 – 12
P1 Kg = 70
P2 Kg = 35
Mf Kgm = 7
P3 Kg = 48
P4 Kg = 30
Mt Kgm = 5
PESO Kg/Weight = 65

ITEM	DESCRIPTION	PRICE CHF
SPS 75 S	Turntable positioner for bench use. Manual tilt. With pedal	4560.00
BPT 300 M	Pneumatically actuated torch arm for MIG welding	2945.00
BPT 300 T	Pneumatically actuated torch arm for TIG welding	3705.00

ACCESSORIES

SPS/TT	Table delayed start device for TIG welding	798.00
SPS/SCH	Hi-frequency shielding	570.00
SPS/ML	Display LCD	608.00
SP/TF	Crater filler device for TIG/WIG welding	912.00
CTP	Pneumatically actuated tail stock	2622.00

LEGEND

SPS	Turntable positioner, standard version
SPS ... S	Turntable positioner with overwelding function and single control for slewing and welding power source start
SPS ... HC	Turntable positioner with 100 mm. hollow centre turntable
SPS ... S HC	Turntable positioner with overwelding function, single control for slewing & welding power source start

Packaging : wooden crate surcharge CHF 42.00 net